

Notices to Mariners, SWEDEN Swedish Maritime Administration



Areas in Swedish Notices to Mariners



SJÖFARTSVERKET

Editorial office
Swedish Maritime Administration
Ufs
601 78 NORRKÖPING
Sweden
tel: 0771 630 605
e-mail: ufs@sjofartsverket.se
Publisher:
Hydrographer Patrik Wiberg

ANNOUNCEMENTS

* 11082

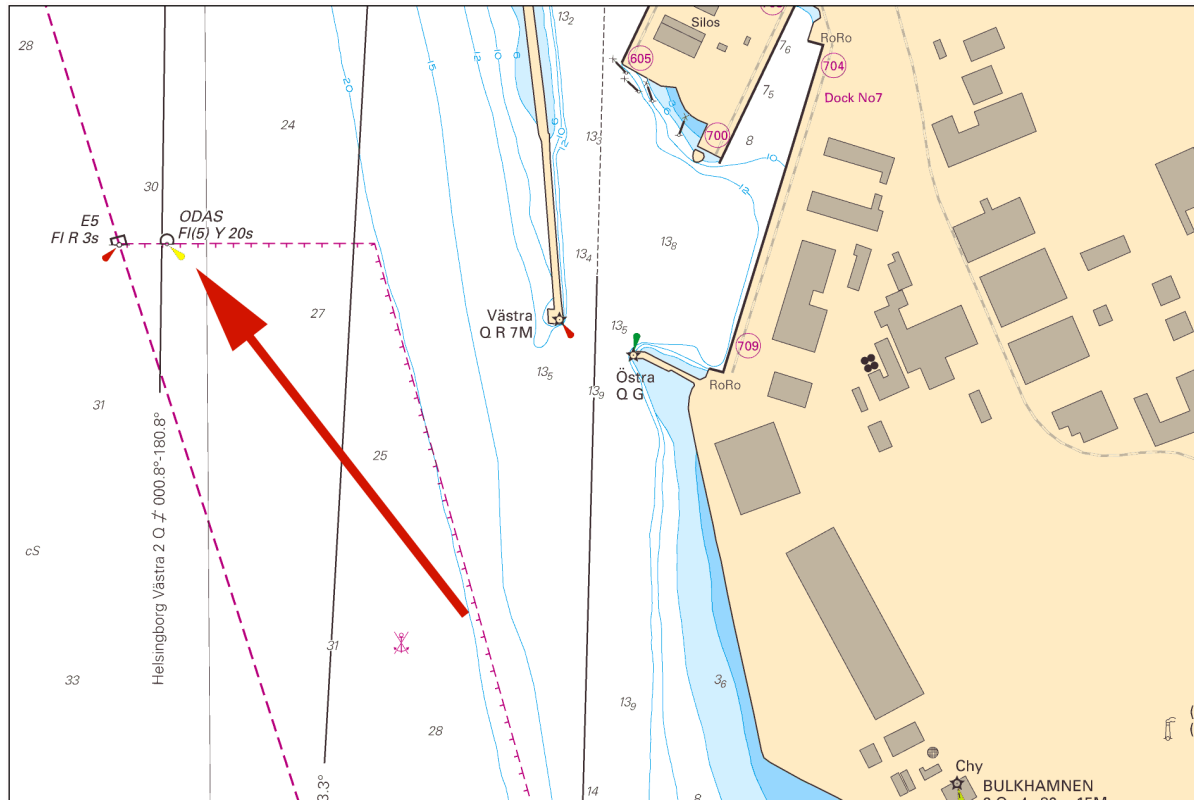
Chart: 9221

Helsingborg. W of Sydhamnen. ODAS light buoy.

Expired notices: 2016:585/10970

Amend	ODAS buoy to ODAS light buoy Fl(5) Y 20s	56-01,200N	012-41,224E
-------	--	------------	-------------

Bsp Sydkusten 2012/s33



Port of Helsingborg. ODAS light buoy.

Helsingborgs hamn. Publ. 5 april 2016

NOTICES

Sea of Bothnia

* 11098

Chart: 5, 53, 532, 533

Sweden. Sea of Bothnia. Söderhamn. Light Hällgrund. Light Kråkö. Lights back in operation.

Expired notices: 2016:581/10912(T), 2016:581/10913(T)

Lights Hällgrund and Kråkö are back in operation.

Light Hällgrund	61-16,58N	017-23,83E
Light Kråkö	61-33,26N	017-18,95E

Adm. LoL vol. C 6087

Adm. LoL vol. C 6066

Bsp Bottenhavet S 2013/s06, s17, s19, s20, s23

Sjöfartsverket, Norrköping. Publ. 6 april 2016

Northern Baltic

* 11069 (P)

Chart: 6141, 6142

Sweden. Northern Baltic. Stockholm. Slussen. Lock 'Karl-Johan-slussen'. Construction work. Restricted area.

Time: June 1, 2016 - May 31, 2021

Lock 'Karl Johans-slussen' will be closed for all vessel traffic in connection with the major rebuilding project 'Slussenprojektet'.

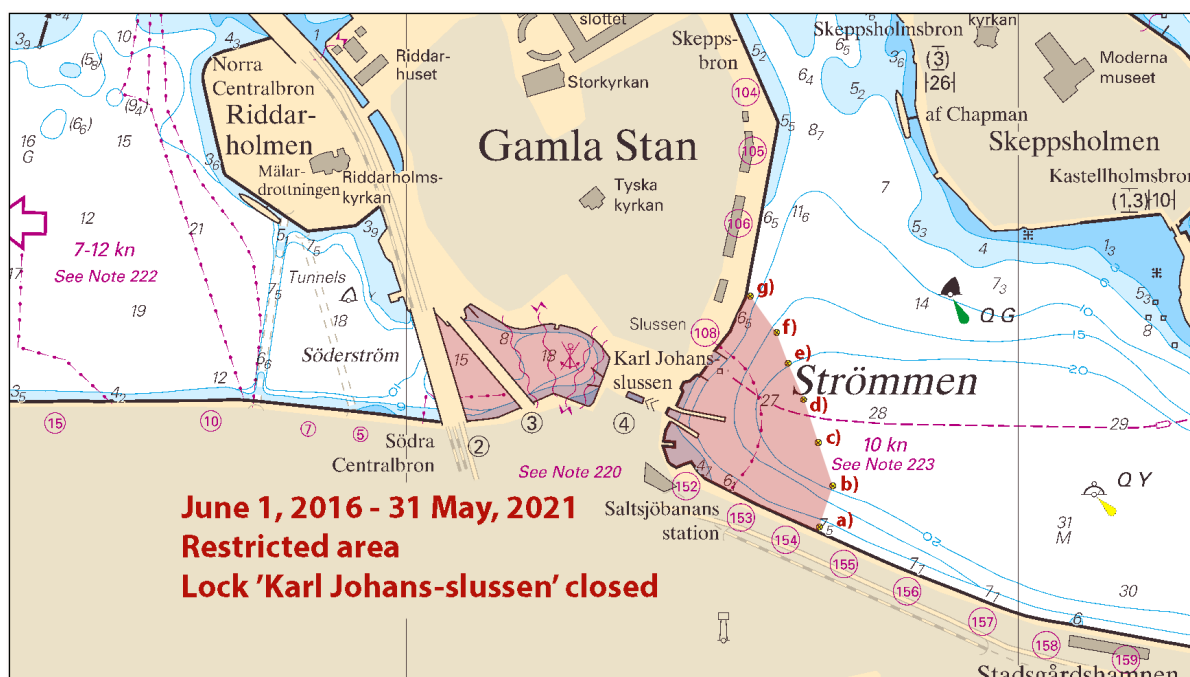
All vessels are prohibited from entering the delineated area as shown on the chartlet.

The area is marked out by light spar buoys in Strömmen as per below.

Further information will be promulgated in Swedish NtMs as soon as it becomes available.

Lock 'Karl Johan-slussen'		59-19,27N	018-04,39E
Bridge 'Södra Centralbron'		59-19,31N	018-04,03E
light spar buoy	a)	59-19,173N	018-04,660E
light spar buoy	b)	59-19,208N	018-04,690E
light spar buoy	c)	59-19,242N	018-04,672E
light spar buoy	d)	59-19,277N	018-04,653E
light spar buoy	e)	59-19,312N	018-04,635E
light spar buoy	f)	59-19,347N	018-04,617E
light spar buoy	g)	59-19,358N	018-04,543E

Bsp Mälaren - Hjälaren 2016/s51, s52, Bsp Mälaren 2014/s51, s52, Bsp Stockholm M 2013/s06, s10, Bsp Stockholm M 2016/s06, s10



Slussen, Stockholm

Länsstyrelsen i Stockholms län. Publ. 5 april 2016

* 11073 (T)

Chart: 6142

Sweden. Northern Baltic. Stockholm. Halvkakssundet. Telegrafberget. Geological surveys.

Time: April 11 - 15, 2016

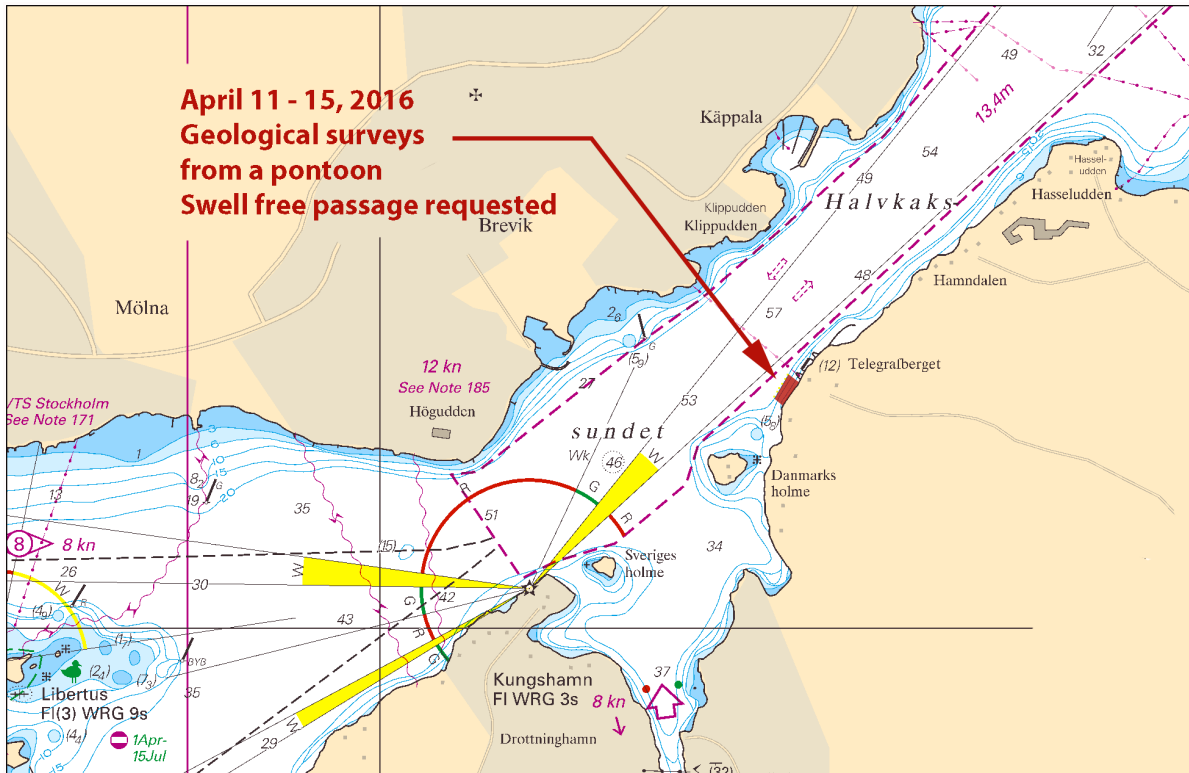
Geological surveys will be performed from a pontoon (size 30 by 12 metres) which will be anchored by winches and/or hydraulic support legs.

Buoys equipped with flashing lights are placed adjacent [to the seaward side] of the pontoon.

Mariners are requested to pass with caution in order to minimise swell during the operation. VHF channel 16 is continuously monitored.

Survey site at Telegrafberget	59-20,45N	018-13,49E
-------------------------------	-----------	------------

Bsp Stockholm M 2013/s11, Bsp Stockholm M 2016/s11



Geological surveys at Telegrafberget

Pampas Marina Marinentreprenad, Solna. Publ. 5 april 2016

* 11083 (T)

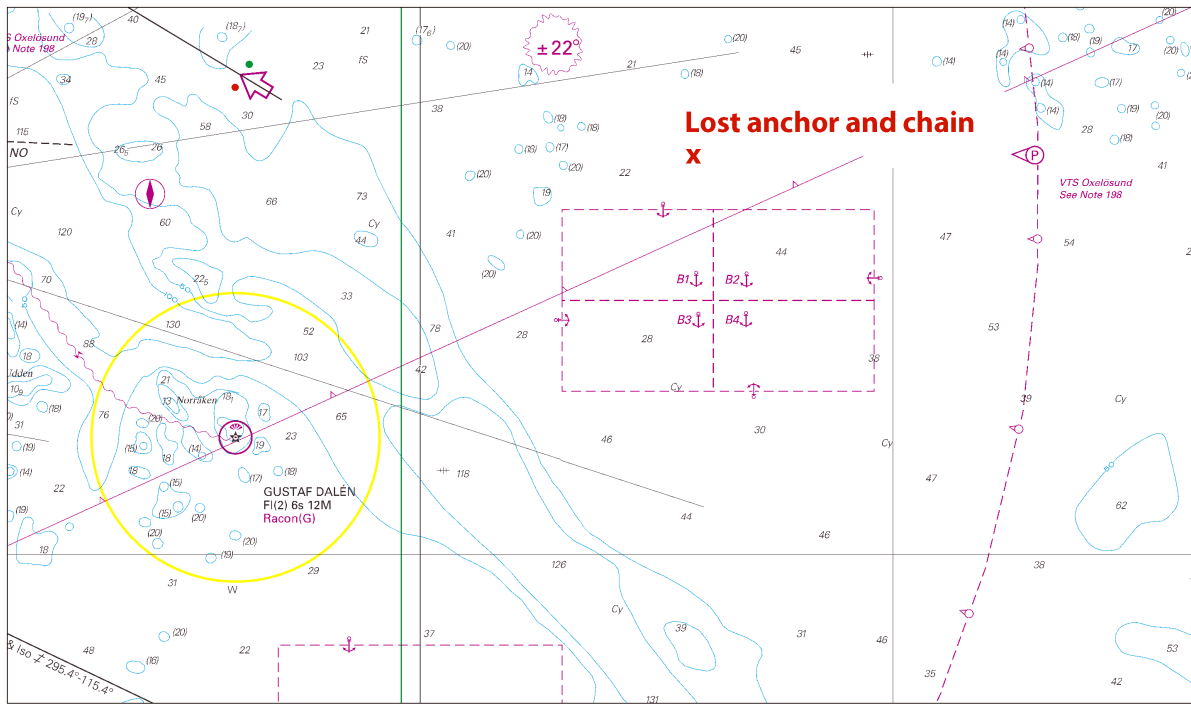
Chart: 617

Sweden. Northern Baltic. Approach to Port of Oxelösund. North of anchorage 'B'. Lost anchor and chain.

An anchor with 7 shackles of chain has been lost in the below position.

lost anchor and chain	58-37,26N	017-32,93E
-----------------------	-----------	------------

Bsp Ostkusten 2015/s31, Bsp Stockholm S 2013/s41, Bsp Stockholm S 2016/s41



Approach to Port of Oxelösund. Lost anchor and chain.

Sjöfartsverket, Norrköping. Publ. 1 april 2016

*** 11089 (T)**

Chart: 616, 6163

Sweden. Northern Baltic. E of Utö. Gunnery exercise. April 14, 2016.

Position: Approx.	58-54N	018-20E	Utö Firing Danger Area
-------------------	--------	---------	------------------------

Gunnery exercise will be carried out within Utö firing range. The current extension of the closed area is given in the table.

Information during practice times VHF channel 16, call Utö skjutfält, or phone +46 (0)8 501 570 45. Information about upcoming practice times, phone: +46 10-823 18 23.

April	Time	Range from shore
14	0800 - 1700	3.8 M
14	1700 - 2000	2.6 M

Not shown in ENC.

Bsp Stockholm S 2013/s18, s37, Bsp Stockholm S 2016/s18, s37

Försvarsmakten, Utö. Publ. 6 april 2016

*** 11096 (T)**

Chart: 6142

Sweden. Northern Baltic. Vaxholm. Kastellet. Cable ferry route. Buoyage.

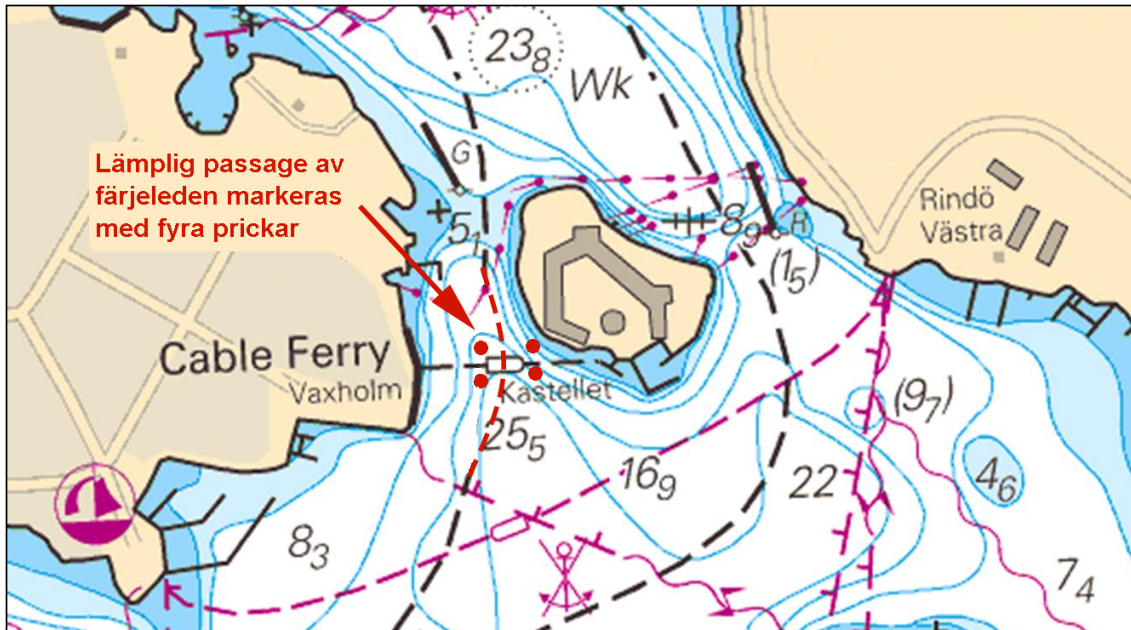
See: 2016:592/11072(T)

4 special spar buoys have been established to mark the most appropriate passage of the cable ferry route between Vaxholm and the island "Kastellet". The spar buoys are showing the deepest part of the cable why passage shall take place between the buoys.

The yellow buoys have been established on trial and will later on be replaced by red and green spar buoys.

special spar buoy	a)	59-24,15N	018-21,42E
special spar buoy	b)	59-24,14N	018-21,42E
special spar buoy	c)	59-24,14N	018-21,48E
special spar buoy	d)	59-24,15N	018-21,48E

Bsp Stockholm M 2013/s14, s46, Bsp Stockholm M 2016/s14, s46, Bsp Stockholm N 2013/s42, Bsp Stockholm N 2016/s42



Passage of cable ferry

Sjöfartsverket, Norrköping. Publ. 7 april 2016

Lake Mälaren and Södertälje kanal

* 11091

Chart: 111

Sweden. Lake Mälaren and Södertälje kanal. Lake Mälaren. Southern part of Björkfjärden. Light 'Bornhuvud'. Sectors.

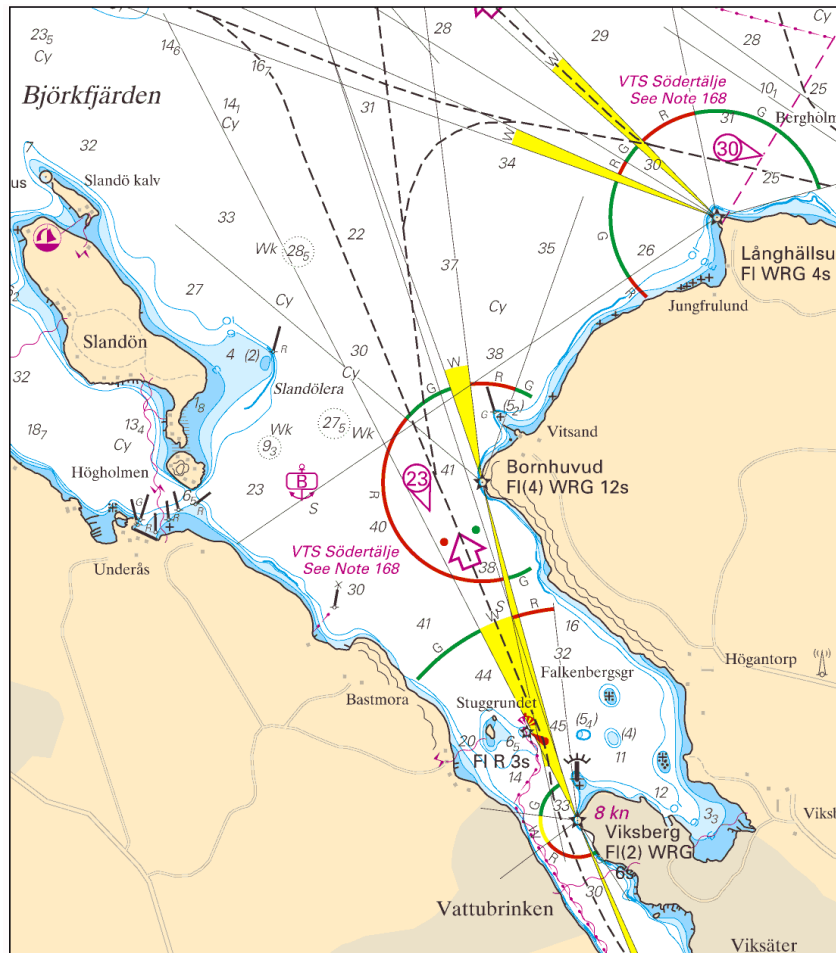
See: 2012:417/8148

A green sector has been added to light 'Bornhuvud'. The correct sector data is as per below:

Light 'Bornhuvud'	59-16,106N	017-34,762E
G 310.0 - 345.0		
W 345.0 - 348.0		
R 348.0 - 130.0		
G 130.0 - 160.5		
W 160.5 - 173.0		
R 173.0 - 199.5		
G 199.5 - 225.0		
Dk 225.0 - 310.0		

Adm LoL C6680-4

Bsp Mälaren - Hjälmaren 2016/s28, Bsp Mälaren 2014/s28



Light Bornhuvud, Lake Mälaren

Sjöfartsverket, Norrköping. Publ. 6 april 2016

* 11095 (T)

Chart: 6141

Sweden. Lake Mälaren and Södertälje kanal. Stockholm. Liljeholmsviken and bridge Västerbron. Works in progress.

Time: April 4 - May 1, 2016.

Drilling operations in progress in two areas, Liljeholmsviken and the waters directly west of bridge Västerbron.

The drilling operations will be performed from work platform "BOLLE", which is assisted by work boat "TRUCKEN".

The crew of the platform will keep watch on VHF Ch 16.

The drilling platform is equipped with AIS, and will be illuminated during nighttime.

Time: April 4 - April 10, 2016. Liljeholmsviken.

Drilling operations in progress by platform "BOLLE" in Liljeholmsviken.

Caution advised.

Work area Liljeholmsviken	a)	59-18,96N	018-01,42E
---------------------------	----	-----------	------------

Time: April 11 - May 1, 2016. Västerbron.

Drilling operations in progress by platform "BOLLE" west of bridge Västerbron.

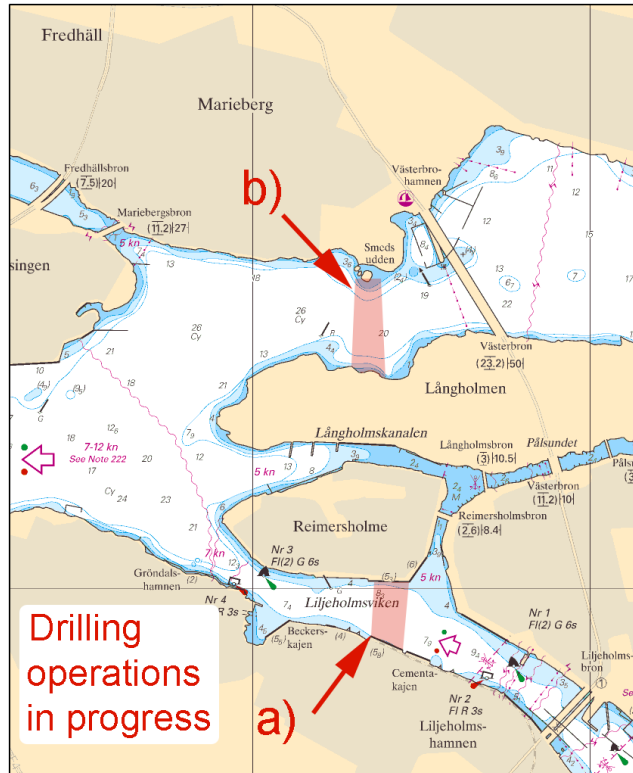
The work area is marked out by six special light spar buoys, FI Y 3s.

Caution advised.

Work area at bridge Västerbron	b)	59-19,41N	018-01,32E
--------------------------------	----	-----------	------------

Work area in Liljeholmsviken not shown in ENC.

Bsp Mälaren - Hjälmaren 2016/s51, Bsp Mälaren 2014/s51



Drilling operations. Liljeholmsviken and bridge Västerbron.

WSP Group, Stockholm. Publ. 6 april 2016

Central Baltic

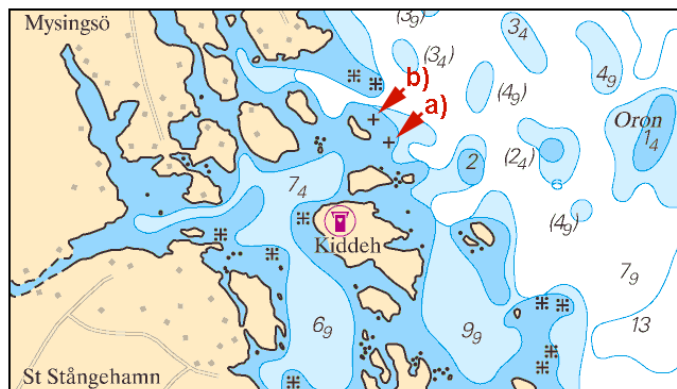
* 11032

Chart: 6241

Sweden. Central Baltic. S of Oskarshamn. Entrance to Kiddeholmen. Shoal.

Insert	underwater rock	a)	57-14,356N	016-30,605E
Insert	underwater rock	b)	57-14,385N	016-30,567E
Amend	3 m contours, see chartlet			

Bsp Kalmarsund 2014/s42



Shoals at Kiddeholmen

Sjöfartsverket, Norrköping. Publ. 7 april 2016

Kattegat

* 11055 (T)

Chart: 1352, 931, 9312

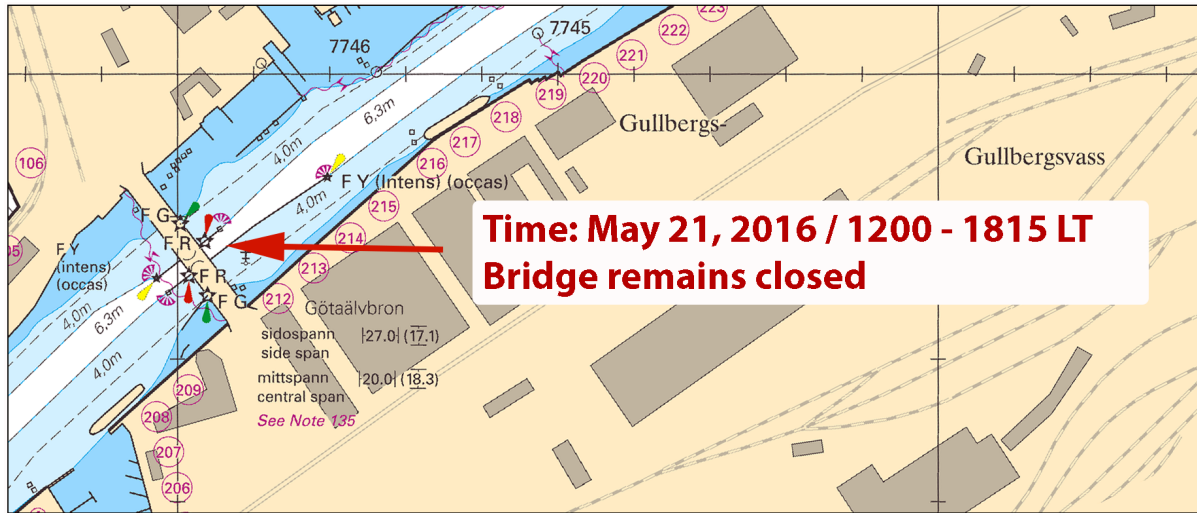
Sweden. Kattegat. Port of Gothenburg. Bridge 'Göta älvbron'. Temporary closure.

Time: May 21, 2016 between 1200 and 1815 LT

Bridge 'Götaälbron' will not opened for vessel traffic due to running competition 'Göteborgsvarvet 2016'.

Bridge 'Götaälbron'	57-42,87N	011-58,02E
---------------------	-----------	------------

Bsp Göta kanal 2011/s59, Bsp Västkusten S 2016/s59



Bridge 'Götaälbron', Port of Gothenburg

Sjöfartsverket, Norrköping. Publ. 6 april 2016

* 11068

Chart: 931

Sweden. Kattegat, Lake Vänern and Trollhätte kanal. Nordre Älv. Kornhall. Fairway reopened.

Expired notices: 2015:576/10858(T)

The rope that has been deployed across the fairway during the winter is now removed. The fairway is open.

Kornhall	57-49,13N	011-52,77E
----------	-----------	------------

Bsp Västkusten S 2016/s62

Sjöfartsverket, Norrköping. Publ. 6 april 2016

* 11090 (T)

Chart: 92, 923, 924

Sweden. Kattegat. W of Halmstad. Ringenäs. Firing exercise. April 6 - 7, 2016.

Position: Approx.	56-40,8N	012-38,6E	Firing restriction area R41 A RINGENÄS
-------------------	----------	-----------	--

Firing will take place at Ringenäs firing range during stated times. The dangerous area extending from shore according to table below. A light on shore, VQ R, will be shown during firing.

Part of restriction area R41A will be closed for vessels during stated times. During practice, light VQ R is shown from shore.

For further information call +46 35 266 39 55. Information about upcoming firings: +46 31 69 28 38.

April	Time	Range
6	0900 - 1500	2.3 M
7	0900 - 1500	2.3 M

Not shown in ENC.

Bsp Västkusten S 2016/s29, s30

Försvarmakten. Publ. 4 april 2016

Lake Vänern and Trollhätte kanal

* 11060 (T)

Chart: 1353

Sweden. Lake Vänern and Trollhätte kanal. Vänerborg. Railway bridge. Closed fairway.

Time: April 23 - 25, 2016.

Passage of railway bridge in Vänersborg is not possible due to repairworks.

Day	Time
April 23 - 24	0000 - 2400 LT
April 25	0000 - 0500 LT

Position: Approx.	58-22,73N	012-18,54E	Järnvägsbron
-------------------	-----------	------------	--------------

Bsp Göta kanal 2011/s42, s62, Bsp Vänern 2014/s50

Sjöfartsverket, Norköping. Publ. 7 april 2016